

# SAMSUNG

# LED TV

## user manual

### SERIES 5

Figures and illustrations in this User Manual are provided for reference only and may differ from actual product appearance. Product design and specifications may be changed without notice.

### Still image warning

Avoid displaying still images (like jpg picture files) or still image element (like TV programme logo, panorama or 4:3 image format, stick or news bar at screen bottom etc.) on the screen. Constant displaying of still picture can cause ghosting of LED screen, which will affect image quality. To reduce risk of this effect, please follow below recommendations:

- Avoid displaying the same TV channel for long periods.
- Always try to display any image on full screen, use TV set picture format menu for best possible match.
- Reduce brightness and contrast values to minimum required to achieve desired picture quality, exceeded values may speed up the burnout process.
- Frequently use all TV features designed to reduce image retention and screen burnout, refer to proper user manual section for details.

### Securing the Installation Space

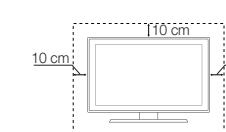
Keep the required distances between the product and other objects (e.g. walls) to ensure proper ventilation. Failing to do so may result in fire or a problem with the product due to an increase in the internal temperature of the product.

When using a stand or wall-mount, use parts provided by Samsung Electronics only.

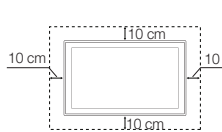
- If you use parts provided by another manufacturer, it may result in a problem with the product or an injury due to the product falling.
- The appearance may differ depending on the product.

- Be careful when you contact the TV because some parts can be somewhat hot.

#### Installation with a stand.



#### Installation with a wall-mount.



Contact SAMSUNG WORLDWIDE		
If you have any questions or comments relating to Samsung products, please contact the SAMSUNG customer care Centre.		
Country	Customer Care Centre ☎	Web Site
AUSTRALIA	1300 352 603	www.samsung.com
NEW ZEALAND	0800 SAMSUNG (0800 726 786)	www.samsung.com
CHINA	400-810-5555	www.samsung.com
HONG KONG	(852) 3698-4698	www.samsung.com/hk_en/
INDIA	1800 1100 11 3030 8282 1800 3000 8282 1800 286 8282	www.samsung.com
INDONESIA	0800-112-8888 021-5699-7777	www.samsung.com
JAPAN	0120-327-527	www.samsung.com
MALAYSIA	1800-88-9999	www.samsung.com
PHILIPPINES	1-800-10-SAMSUNG(726-7864) for PLDT 1-800-3-SAMSUNG(726-7864) for Digital 1-800-8-SAMSUNG(726-7864) for Globe 02-5805777	www.samsung.com
SINGAPORE	1800-SAMSUNG(726-7864)	www.samsung.com
THAILAND	1800-29-3232 02-689-3232	www.samsung.com
TAIWAN	0800-329-999 0266-026-066	www.samsung.com
VIETNAM	1 800 588 889	www.samsung.com



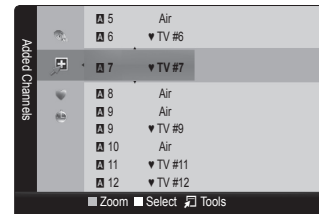
BN98-04550A-02

## Channel Menu

### Seeing Channels

#### Channel List

Select a channel in the **All Channels**, **Added Channels**, **Favourites** or **Programmed** screen by pressing the **▲** / **▼** buttons, and pressing the **ENTER** button. Then you can watch the selected channel.



- **All Channels**: Shows all currently available channels.
- **Added Channels**: Shows all added channels.
- **Favourites**: Shows all favourite channels.
- **Programmed**: Shows all currently reserved Programmes.

Using the remote control buttons with the **Channel List**

- **Green (Zoom)**: Enlarges or shrinks a channel number.
- **Yellow (Select)**: Selects multiple channel lists. Select desired channels and press the Yellow button to set all the selected channels at the same time. The **✓** mark appears to the left of the selected channels.
- **Tools**: Displays the **Channel List** option menu. (The Options menu may differ depending on the situation.)

#### Channel Status Display icons

Icons	Operations
✓	A channel selected.
♥	A channel set as a favourites.
🔒	A locked channel.
🕒	A reserved programme.

### Retuning Channels

#### Area

You can change the desired area.

#### Auto Store

(depending on the country)

Scans for a channel automatically and stores in the TV.

Automatically allocated programme numbers may not correspond to actual or desired programme numbers. If a channel is locked, the PIN input window appears.

#### Manual Store

Scans for a channel manually and stores in the TV.

If a channel is locked, the PIN input window appears.

According to channel source, **Manual Store** may be supported.

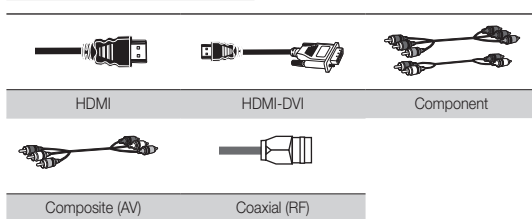
- 1 -

## Getting Started

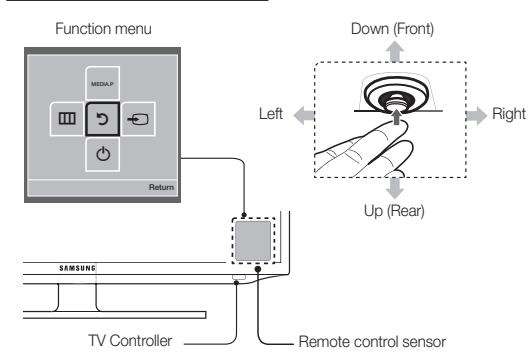
### Accessories

- Remote Control & Batteries (AAA x 2)
- Owner's Instructions
- Warranty Card / Safety Guide (Not available in some locations)
- Holder-Wire stand
- Power Cord

### Input Cables (Sold Separately)



### TV Controller (Panel Key)



Power on	Turns the TV on by pressing the controller in standby mode.
Adjusting the volume	Adjusts the volume by moving the controller from side to side when the power is on.
Selecting a channel	Selects a channel by moving the controller up and down when the power is on.
Using the function menu	Press the controller when the power is on, then the function menu screen appears. If you press it again, the function menu screen disappears.
Using the Menu	Selects the <b>Menu</b> by moving the controller in the function menu screen. The OSD(On Screen Display) of your TV's feature appears.
Selecting the Source	Selects the <b>Source</b> by moving the controller in the function menu screen. The <b>Source List</b> screen appears.
Selecting the Media Play	Selects the <b>MEDIA P</b> by moving the controller in the function menu screen. The <b>Media Play</b> main screen appears.
Power Off	Selects the <b>Power Off</b> to turn the TV off by moving the controller in the function menu screen.
Exits the menu when pressing the controller more than 1 second.	
When selecting the function by moving the controller to the up/down/left/right directions, be sure not to press the controller. If you press it first, you cannot operate it to move the up/down/left/right directions.	

### Channel Mode

Channels will be switched within the favourite or memorised channel list.

- **Added Channels**: Shows all added channels.
- **Favourite Ch.**: Shows all favourite channels.

### Fine Tune

If the reception is clear, you do not have to fine tune the channel, as this is done automatically during the search and store operation. If the signal is weak or distorted, fine tune the channel manually.

- Fine tuned channels that have been saved are marked with an asterisk "\*" on the right-hand side of the channel number in the channel banner.
- To reset the fine-tuning, select **Reset**.

## Picture Menu

### Mode

Select your preferred picture type.

- **Dynamic**: Suitable for a bright room.
- **Standard**: Suitable for a normal environment.
- **Movie**: Suitable for watching movies in a dark room.

### Backlight / Contrast / Brightness / Sharpness / Colour / Tint (G/R)

Your television has several setting options for picture quality control.

### Advanced Settings

(available in **Standard** / **Movie** mode)

Compared to previous models, new Samsung TVs have a more precise picture.

- **Colour Space (Auto / Native)**: Adjusts the range of colours available to create the image.
- **White Balance**: Adjust the colour temperature for a more natural picture.
- **R-Offset / G-Offset / B-Offset**: Adjust each colour's (red, green, blue) darkness.
- **R-Gain / G-Gain / B-Gain**: Adjust each colour's (red, green, blue) brightness.
- **Reset**: Resets the **White Balance** to its default settings.
- **Gamma**: Adjusts the primary colour intensity.
- **Dynamic Contrast (Off / Low / Medium / High)**: Adjusts the screen contrast.
- **Black Tone (Off / Dark / Darker / Darkest)**: Select the black level to adjust the screen depth.
- **Flesh Tone**: Emphasize pink "Flesh Tone".
- **Motion Lighting (Off / On)**: Reduce power consumption by brightness control adapted motion.
- Only available in **Standard** mode.

### Plug & Play

When you turn the TV on for the first time, a sequence of on-screen prompts will assist in configuring basic settings. Press the **POWER** button. **Plug & Play** is available only when the Input source is set to TV.

- Connecting the power cord and antenna. (refer to 'Connections')

#### Selecting a language

Plug & Play

Select the desired OSD (On Screen Display) language.

1. Press the **ENTER** button. Press the **▲** / **▼** button, then press the **ENTER** button to select the appropriate area.

#### Selecting a Home Use mode

Plug & Play

Select Home User when installing the TV in your home.

- Select the **Home Use** mode.
- **Store Demo** mode is for retail environments.
- When pressing TV controller, the function menu screen appears. Select the **Menu** and press it more than 5 seconds using the controller. The **Store Demo** mode is set. Cancel the **Store Demo** by selecting **Source** and pressing it more than 5 seconds.

#### Selecting an Area

Plug & Play

Select Area.

1. Press the **ENTER** button. Press the **▲** / **▼** button, then press the **ENTER** button to select the appropriate area.

#### Auto Store

The channel search will start automatically.

#### Setting the Clock Set

Plug & Play

Press the **▲** / **▼** button to select **Day**, **Month**, **Year**, **Hour** and **Minute**. Set these by pressing the **▲** / **▼** / **▶** / **◀** button, and press the **ENTER** button to go next step.

#### Viewing the HD Connection Guide

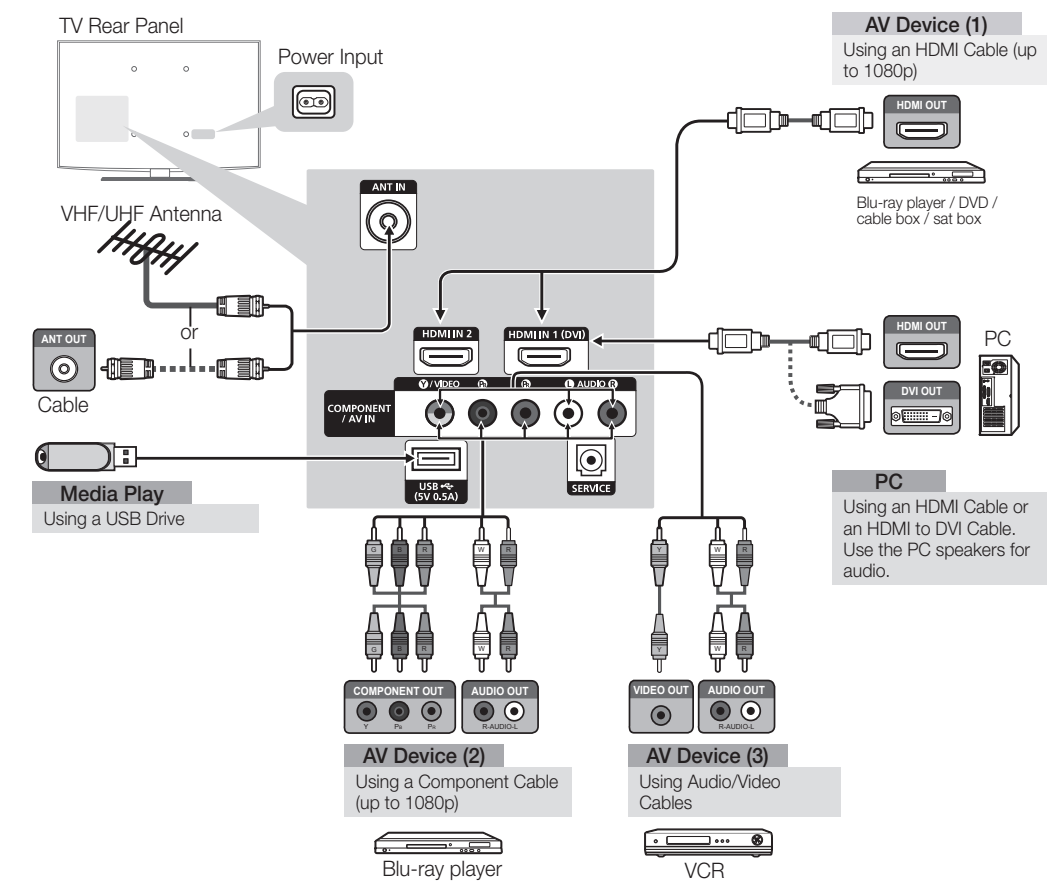
The connection method for the best HD screen quality is displayed.

#### Enjoy your TV.

Press the **ENTER** button.

## Connections

- For better picture and audio quality, connect to a digital device using an HDMI cable.
- The picture may not display normally (if at all) or the audio may not work if an external device that uses an older version of HDMI mode is connected to the TV. In such a problem occurs, ask the manufacturer of the external device about the HDMI version and, if out of date, request an upgrade.
- If an HDMI to DVI cable is connected to the HDMI IN 1(DVI) port, the audio does not work.
- Be sure to purchase a certified HDMI cable. Otherwise, the picture may not display or a connection error may occur.
- PC/DVI AUDIO IN input are not supported.
- DIGITAL AUDIO OUTPUT(OPTICAL) is not supported.
- For HDMI/DVI cable connection, you must use the HDMI IN 1(DVI) jack.
- Connecting through the HDMI cable may not be supported depending on the PC.
- If an HDMI to DVI cable is connected to the HDMI IN 1(DVI) port, the audio does not work.
- **SERVICE**: Connector for service only.



## Changing the Input Source

### Source List

Use to select TV or other external input sources such as DVD / Blu-ray players / cable box / STB satellite receiver connected to the TV.

1. Press the **SOURCE** button.
  2. Select a desired external input source.
- **TV / AV / Component / HDMI1/DVI / HDMI2**
  - You can only choose external devices that are connected to the TV. In the **Source List**, connected inputs will be highlighted.

### How to use Edit Name

Edit Name lets you associate a device name to an input source. To access **Edit Name**, press the **TOOLS** button in **Source List**. The following selections appear under **Edit Name**:

- **VCR / DVD / Cable STB / Satellite STB / PVR STB / AV Receiver / Game / Camcorder / PC / DVI PC / DVI / TV / IPTV / Blu-ray / HD DVD / DMA**: Name the device connected to the input jacks to make your input source selection easier.
- When connecting a PC to the HDMI IN 1(DVI) port with HDMI cable, you should set the TV to **PC** mode under **Edit Name**.
- When connecting a PC to the HDMI IN 1(DVI) port with HDMI to DVI cable, you should set the TV to **DVI PC** mode under **Edit Name**.
- When connecting an AV devices to the HDMI IN 1(DVI) port with HDMI to DVI cable, you should set the TV to **DVI** mode under **Edit Name**.

### Information

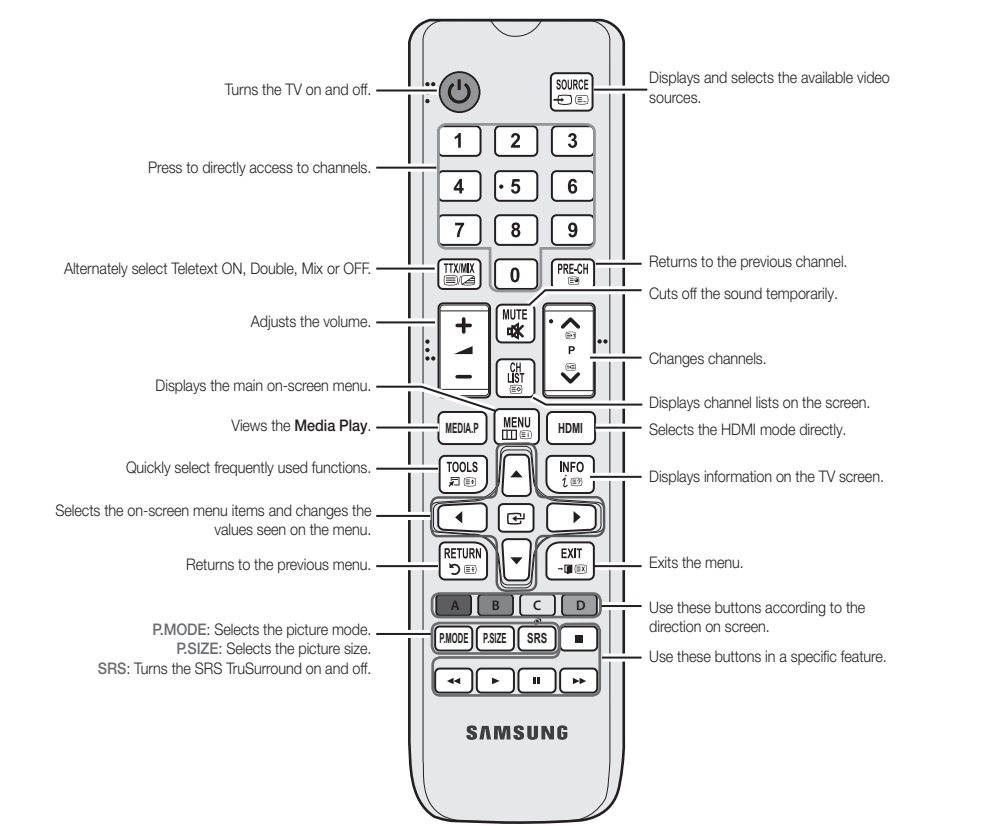
You can see detailed information about the selected external device.

- **Information** only available for the current connected source.

- 3 -

## Remote Control

This remote control has Braille points on the Power, Channel, and Volume buttons and can be used by visually impaired persons.

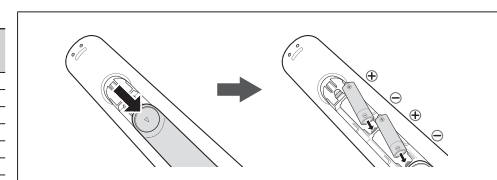


### Display Modes (HDMI/DVI Input)

Optimal resolution is 1920 X 1080 @ 60 Hz.

Mode	Resolution	Horizontal Frequency (kHz)	Vertical Frequency (Hz)	Pixel Clock Frequency (MHz)	Sync Polarity (H / V)
IBM	640 x 350	31.469	70.086	25.175	+/-
	720 x 400	31.469	70.087	28.322	-/+
	640 x 480	35.000	66.667	30.240	-/-
	832 x 624	49.728	74.551	57.284	-/-
MAC	1152 x 870	68.681	75.062	100.000	-/-
	640 x 480	31.469	69.840	25.175	-/-
	640 x 480	37.861	72.809	31.500	-/-
	640 x 480	37.500	75.000	31.500	-/-
VESA DMT	800 x 600	37.879	60.317	40.000	+/-
	800 x 600	48.077	72.188	50.000	+/-
	800 x 600	48.875	75.000	48.500	+/-
	1024 x 768	48.363	60.004	65.000	+/-
VESA DMT	1024 x 768	56.476	70.069	75.000	-/-
	1024 x 768	60.023	75.029	78.750	+/-
	1152 x 864	67.500	75.000	108.000	+/-
	1280 x 720	45.000	60.000	74.250	+/-
VESA DMT	1280 x 800	49.702	59.810	83.500	-/+
	1280 x 1024	63.981	60.020	108.000	+/-
	1280 x 1024	79.976	75.025	135.000	+/-
	1366 x 768	47.712	59.790	85.500	+/-
VESA DMT	1440 x 900	55.335	59.867	108.500	-/+
	1600 x 900(RB)	60.000	60.000	108.000	+/-
	1680 x 1050	65.290	59.954	146.250	-/+
	1920 x 1080	67.500	60.000	148.500	+/-

### Installing batteries (Battery size: AAA)



### NOTE

- Use the remote control within 23 feet from TV.
- Bright light may affect the performance of the remote control. Avoid using nearby special fluorescent light or neon signs.
- The product colour and shape may vary depending on the model.

- 4 -

## Sound Menu

### Mode

Tools

- **Standard**: Selects the normal sound mode.
- **Music**: Emphasizes music over voices.
- **Movie**: Provides the best sound for movies.
- **Clean Voice**: Emphasizes voices over other sounds.
- **Amplify**: Increase the intensity of high-frequency sound to allow a better listening experience for the hearing impaired.

### Equalizer

(standard sound mode only)

- **Balance**: Adjusts the balance between the right and left speaker.
- **100Hz / 300Hz / 1KHz / 3KHz / 10KHz** (Bandwidth Adjustment): Adjusts the level of specific bandwidth frequencies.
- **Reset**: Resets the equalizer to its default settings.

### SRS TruSurround HD

Tools

(standard sound mode only)

This function provides a virtual 5.1 channel surround sound experience through a pair of speakers using HRTF (Head Related Transfer Function) technology.

### Auto Volume

Because each broadcasting station has its own signal conditions, the volume may fluctuate each time channel is changed. This feature lets you automatically adjust the volume of the desired channel by lowering the sound output when the modulation signal is high or by raising the sound output when the modulation signal is low.

### Selecting the Sound Mode

Tools

When you set to **Dual I-II**, the current sound mode is displayed on the screen.

Audio Type	Dual I-II		Default
	Mono	Stereo	
A2 Stereo	Mono	Stereo ↔ Mono	Automatic change
	Stereo	Dual I ↔ Dual II	Dual I
NICAM Stereo	Mono	Mono	Automatic change
	Stereo	Mono ↔ Stereo	Automatic change
Dual I	Mono	Mono ↔ Dual I	Dual I
	Dual	↔ Dual II	Dual I

- If the stereo signal is weak and an automatic switching, occurs, then switch to the mono.
- Only activated in stereo sound signal.
- This function is available for all input sources.

### Sound Reset

- **Reset All**: Reset all sound settings to the factory defaults.

## Setup Menu

### Setting the Time

#### Time

The current time will appear every time you press the **INFO** button.

- **Clock Set**: Set the **Day**, **Month**, **Year**, **Hour**, **Minute**.

- **Sleep Timer**

Automatically shuts off the TV after a preset period of time. (30, 60, 90, 120, 150 and 180 minutes).

To cancel **Sleep Timer**, select **Off**.

#### Timer 1 / Timer 2 / Timer 3

Three different on / off timer settings can be made. You must set the clock first.

- **On Time / Off Time**: Set the hour, minute and Activate / Inactivate. (To activate the timer with the setting you have chosen, set to **Activate**.)
- **Volume**: Set the desired volume level.

- **Contents**: When the **On Time** is activated, you can turn on a specific channel or play back contents such as photo or audio files.
- **TV/USB**: Select **TV** or **USB**. (Make sure that an USB device is connected to your TV.)

- **Antenna**: Displays the current antenna source.
- **Channel**: Select the desired channel.
- **Music/Photo**: Select the folder containing MP3/JPEG files on the USB device.

- The maximum displayed number of files, including sub folders, in one folder of USB storage device is 2000.
- The media may not be playing smoothly when using the device lower than USB 2.0.

- **Repeat**: Select **Once**, **Everyday**, **Mon-Fri**, **Mon-Sat**, **Sat-Sun** or **Manual** to set at your convenience. If you select **Manual**, you can set up the day you want to activate the timer.

### Security

- The PIN input screen appears before the setup screen.
- Enter your 4-digit PIN, the default of which is "0-0-0-0". Change the PIN using the **Change PIN** option.

- **Child Lock (Off / On)**: Lock channels in **Channel List**, to prevent unauthorized users, such as children, from watching unsuitable programme.
- Only available when the Input source is set to **TV**.

- **Change PIN**: Change your password required to set up the TV.
- If you forget the PIN code, press the remote control buttons in the following sequence in Standby mode, which resets the PIN to "0-0-0-0": MUTE → 8 → 2 → 4 → POWER (on).

### Language

Set the menu language.

Select Language and press the **ENTER** button.

- 7 -



